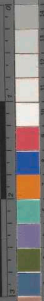


inches

centimeters



Patch #	L*	a*	b*	Density
1	38.12	13.80	17.82	0.75
2	65.43	16.19	3.44	0.98
3	49.87	16.24	11.16	1.24
4	44.26	16.24	14.71	1.64
5	55.56	13.06	3.44	1.95
6	70.42	16.19	3.44	2.38
7	63.51	16.19	11.16	2.38
8	39.92	16.19	3.44	2.38
9	44.26	16.19	11.16	2.38
10	70.42	16.19	3.44	2.38
11	63.51	16.19	11.16	2.38
12	39.92	16.19	3.44	2.38
13	44.26	16.19	11.16	2.38
14	70.42	16.19	3.44	2.38
15	63.51	16.19	11.16	2.38
16	39.92	16.19	3.44	2.38
17	44.26	16.19	11.16	2.38
18	70.42	16.19	3.44	2.38
19	63.51	16.19	11.16	2.38
20	39.92	16.19	3.44	2.38
21	44.26	16.19	11.16	2.38
22	70.42	16.19	3.44	2.38
23	63.51	16.19	11.16	2.38
24	39.92	16.19	3.44	2.38
25	44.26	16.19	11.16	2.38
26	70.42	16.19	3.44	2.38
27	63.51	16.19	11.16	2.38
28	39.92	16.19	3.44	2.38
29	44.26	16.19	11.16	2.38
30	70.42	16.19	3.44	2.38

Patch #	L*	a*	b*	Density
31	38.12	13.80	17.82	0.75
32	65.43	16.19	3.44	0.98
33	49.87	16.24	11.16	1.24
34	44.26	16.24	14.71	1.64
35	55.56	13.06	3.44	1.95
36	70.42	16.19	3.44	2.38
37	63.51	16.19	11.16	2.38
38	39.92	16.19	3.44	2.38
39	44.26	16.19	11.16	2.38
40	70.42	16.19	3.44	2.38
41	63.51	16.19	11.16	2.38
42	39.92	16.19	3.44	2.38
43	44.26	16.19	11.16	2.38
44	70.42	16.19	3.44	2.38
45	63.51	16.19	11.16	2.38
46	39.92	16.19	3.44	2.38
47	44.26	16.19	11.16	2.38
48	70.42	16.19	3.44	2.38
49	63.51	16.19	11.16	2.38
50	39.92	16.19	3.44	2.38
51	44.26	16.19	11.16	2.38
52	70.42	16.19	3.44	2.38
53	63.51	16.19	11.16	2.38
54	39.92	16.19	3.44	2.38
55	44.26	16.19	11.16	2.38
56	70.42	16.19	3.44	2.38
57	63.51	16.19	11.16	2.38
58	39.92	16.19	3.44	2.38
59	44.26	16.19	11.16	2.38
60	70.42	16.19	3.44	2.38

Don Williams

M000549

All values are batch averages

D50 Illuminant, 2 degree observer

699

